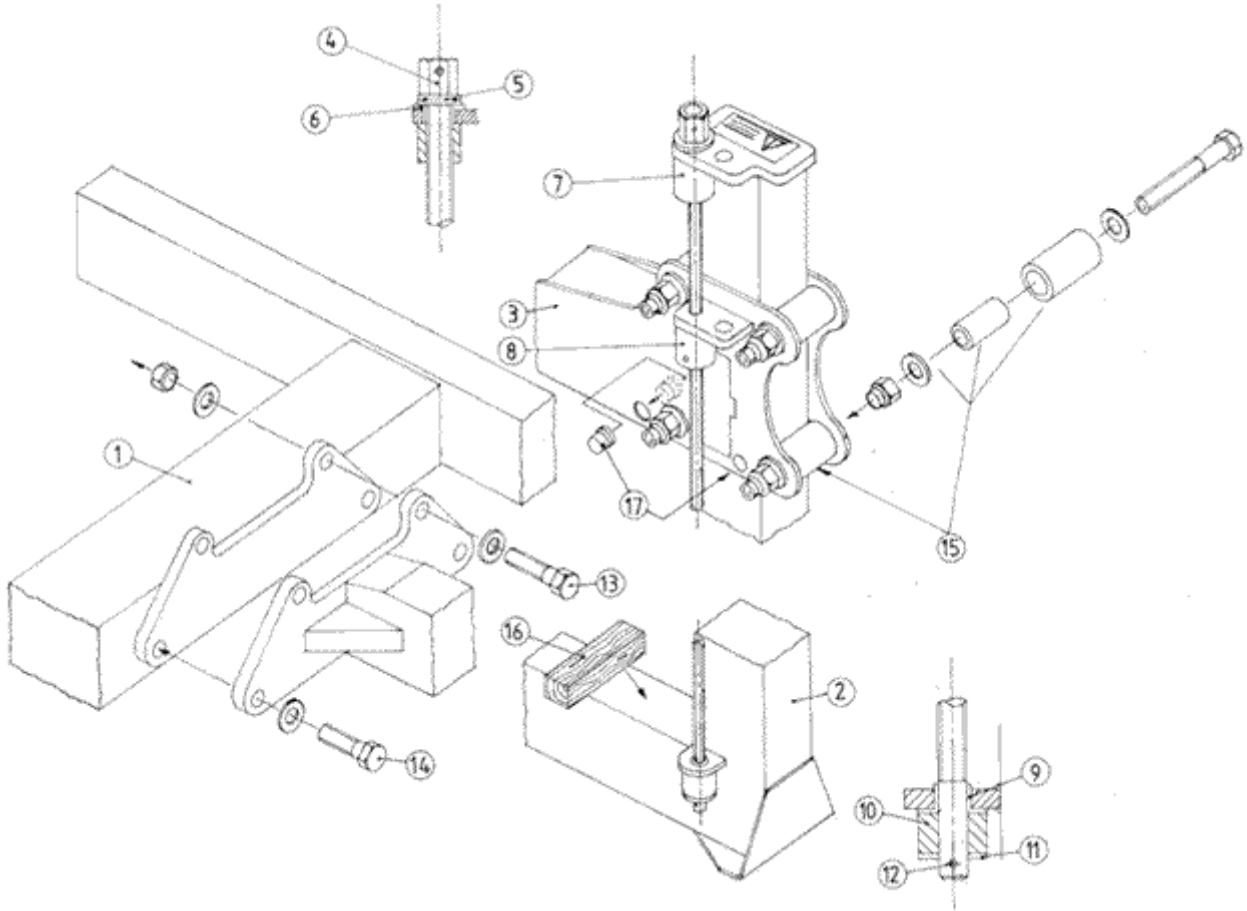


EazyRizer

ORIGINAL RED Assembly & Instruction Sheets

1. Couple the mainframe (**ITEM 2**) to the base frame (**ITEM 1**) using the two **M8** bolts (**ITEM 13**) & **M10** bolts (**ITEM 14**) tightening them to **18 & 24 lbs ft** respectively, now completely remove the screw shaft assembly (**ITEM 4**).
2. Take the main lifting arm (**ITEM 3**) and remove the two outer guides (**ITEM 15**).
3. *Now fit the 8 small nylon guides (ITEM 17) as shown with the 'head' inside the arm.*
4. These can be held in place with a dab of petroleum jelly while you slide the arm onto the main pillar (**ITEM 2**). failure to fit these will result in damage to the finish.
5. Re-fit the two guide assemblies (**15**) back to their respective positions and locate the **M8** bolts, place a small block of wood (**ITEM 16**) in the corner of the lift and lower the main arm (**ITEM 3**) on to it.
Now while applying a downward pressure with your knee to the far end of (**ITEM 3**) you will be able to position the guides squarely against the face of the pillar maintaining this pressure tighten the four high tensile **M8** guide bolts to **18 lb ft** torque.
6. Replace the main screw shaft (**ITEM 4**) with the bearing thrust race (**ITEM 5**) nylon bush (**ITEM 6**) and large rubber buffer (**ITEM 7**) all in place.
Screw the shaft through the bronze bearing nut (**ITEM 8**) and continue through into the support housing at the bottom of the lift.
Now fit the nylon bush (**ITEM 9**) small rubber buffer (**ITEM 10**) **M14** washer (**ITEM 11**) and finally the split pin (**ITEM 12**).
7. Grease the screw shaft thoroughly with the sachet provided and re-apply at **REGULAR** intervals. **Your lift is now ready for use.**

This product is designed to give you life long service. please keep clean and lubricated!



EazyRizer ORIGINAL RED Instructions

Your lift has been extensively tested meeting the highest relevant legislative standards. Furthermore by using high precision laser cutting for component manufacture and 'state of the art' welding technology we can offer you:

A LIFETIME MECHANICAL GUARANTEE.

EAZYRIZER has a safe working load of 350kg-770lbs chassis method and 250kg - 550lbs WHEEL METHOD

Please use the lift sensibly and follow the guidelines set out below for your personal safety. Keep hands, feet and loose clothing away from all moving parts when operating.

We strongly advise assistance in the initial stages until proficiency is achieved for solo operation and remember! always use the lift on a flat and level solid base never on sloping, soft or uneven surfaces.

Never climb onto the machine when elevated.

When involving wheels front forks or engine removal complete all heavy torquing at ground level then raise to suit.

If using a power drill take care not to reach the extremes of travel at speed otherwise snatch or even damage to the machine may occur (clockwise to raise - anti-clockwise to lower). A buffer is incorporated to reduce this effect. If in doubt about the contents or context please contact your distributor for free advice before use.

WHEEL MOUNTING

1. Insert both telescopic arms as shown in the main illustration **FIG1**.
2. Remove the side stand capture 'C' clamp from it's housing **FIG 2B** and siacken the **17mm** adjuster bolt.
3. Slide the fully lowered lift partialy under the bike and lower the side-stand, next position the lift as the side-stand and capture plate align. then position the telescopic arms to fit around the tyres and push the liff home unit the 'U' tubes contact the tyre wall
4. Holding the bike upright position the side-stand capture plate to sit squarely under the side stand foot **FIG 3** then fit the 'C' clamp with its fingers located in the bracket aperture and lock down with the **M8** bolt provided (**avoid over tightening**).
5. Whenever possible fit the 'u' bolt around the stand leg for added security. **FIG 3**.
6. Now with a **22mm** socket raise the lift by turning the screwshaft '**CLOCKWISE**' until the wheels just break ground - **5mm MAX** check the bike is vertical and the side stand is secure adjusting atitude if required, now **TIGHTEN** the side stand bracket adjuster bolt with a **17mm** wrench to **40lbs ft** >
NOTE: an indicator of maximum telescopic arm travel is provided in the form of a **5mm** hole in the top of the wheel mountings **FIG 1**.

WARNING

It is imperative that your full attention is paid to the adjustable stand -bracket & clamp assembly, failure to secure and fasten the fixings as directed may result in damage or even personal injury. furthermore do not attempt adjustmens when elevated.

CHASSIS-SUPERBIKE

1. Follow instructions **2 ABOVE** and place the multi-mountings on the lifting beam as in main illustration. **see supplement sheet** take care to locate the rear mounting securely under the monoshock or centre stand if fitted and the front mounting under the collector pipes as illustrated, **NOTE: in some cases it will be necessary to fit the mountings after the lift is in place**
2. Now follow instructions **No 3/4/5/6. (Disregard the reference to,Telescopic Wheel Mountings)**.
3. For bikes with centre-stands lift from this point with the stand in the raised position **NOTE:** the rear multi-bracket is designed so the '**TABS**' can be bent down if needed for location spares are available seperately

CHASSIS- HARLEY DAVIDSON & CLASSICS *duplex frames*

1. Locate the beam mountings on the main lifting arm keeping them as far apart as possible and tighten the four M8 bolts to secure the beams to the main arm. now slide the lift under the bike locating it in the best position to ensure maximum stability.
2. With the beams firmly under the frame turn the 22mm drive nut clockwise to raise the lift until full contact is made, now secure the beams to the frame by using the hook bolts provided or tie down with a suitable alternative see supplement sheet.

Never operate the lift with worn or damaged parts as this may compromise the safety of the machine.

Regularly check the four-main M8 bolts (FIG 4) and tension to 20lbs ft if necessary.

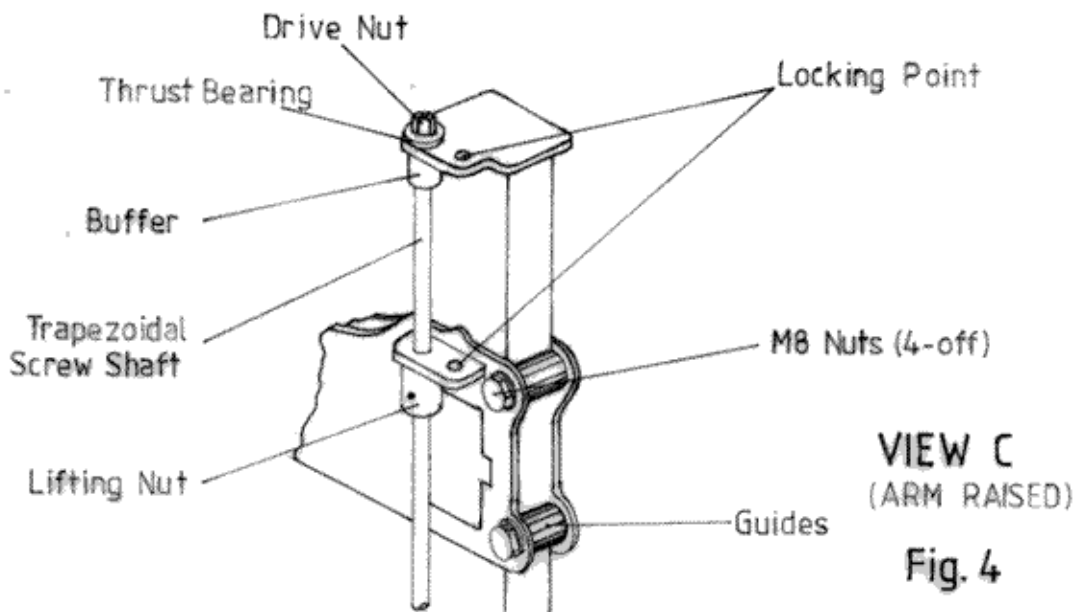
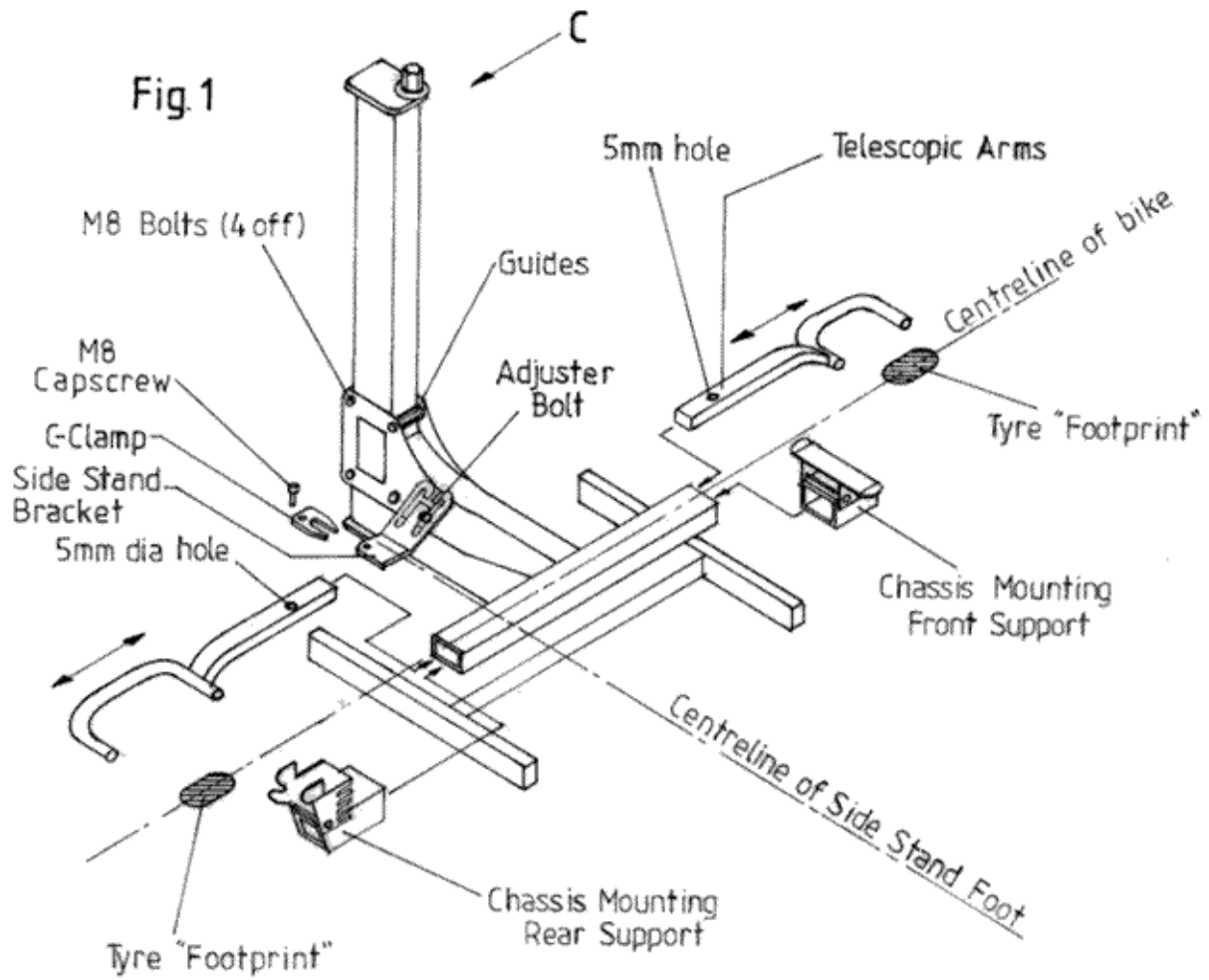
Always keep the screw shaft bronze nut and top bearing well lubricated with LM type grease.

**When employing a power drill ensure it has a rating of 600 watts & gear reduction drive around 1000 rpm.
DO NOT EXCEED THIS SPEED.**

Declaration of Conformity Dated 25th June 1998	
Motor Cycle Lift. Type A.	Serial No 99/QD/00
Complies to Machinery Directives	89/392/EEC 91/36EEC 93/44/EEC& 93/68EEC.
EC Type Examination by	S.G.S. UK. Tividale , West Midlands B69 3HX
Technical File No	DUR20518/RWR/MD98-MDTf207. certificate no MDC207
This equipment conforms to the above standards & directives	
director	
Quasar Products LTD. Tel (44) 01827 61754. Fax (44) 01827 61677.	
2c Mariner, Lichfield Rd Ind Est Tamworth, Staffordshire B79 7UL United Kingdom	

If in any doubt whatsoever [contact us](#) for advice

TYPE A



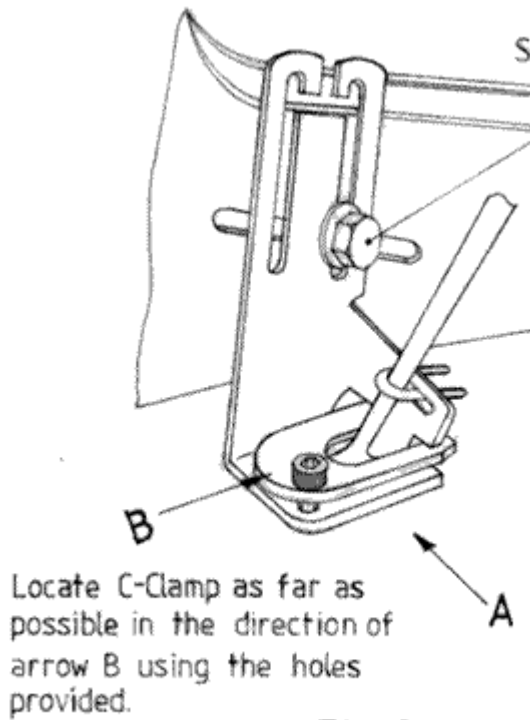


Fig. 2

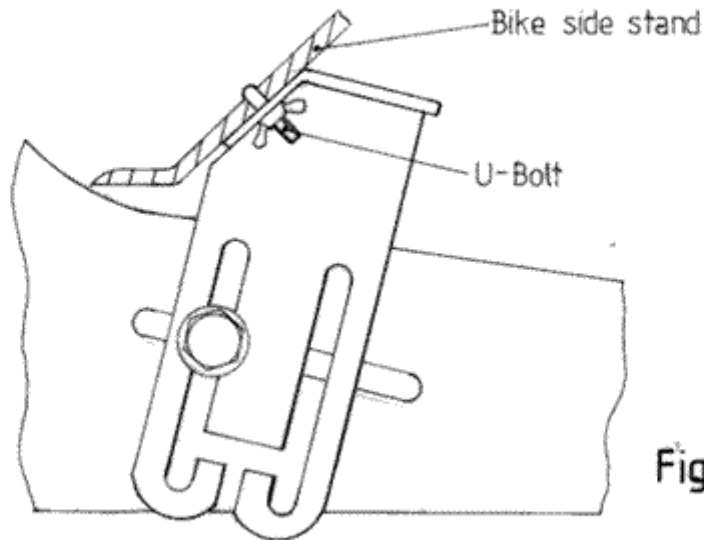
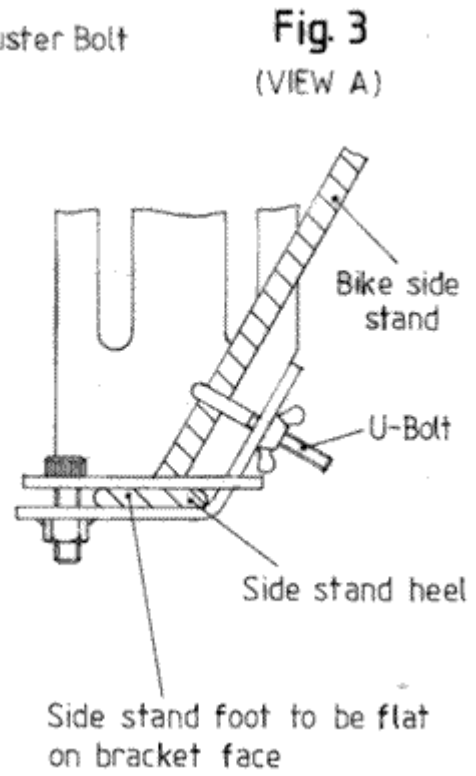


Fig. 2A

ALTERNATIVE POSITIONING OF SIDE STAND BRACKET
(Note:-G-Clamp is not used)